

Underground Containments Systems



compolite[®]

Compolite[®] underground containment sumps systems prevent the release of gas from penetrating into the soils and meanwhile prevent the water and dust from entering into sumps.

Introduction

Compolite[®] underground containments systems are made of high-quality composite materials via pioneering production technology, which contain: fuel tank manhole sumps, handhole sumps, dispenser sumps, and remote filling boxes.

Fuel Tank Manhole Sumps are designed on the fuel tank manhole, which will provide a big entrance and space for the maintenance engineer to enter into the manhole sumps and fuel tank for maintenance and checking activities in gas station. Solid base tank manhole sumps can also be used for cable manhole sumps.

Hand Hole Sumps can be installed in gas station as direct filling sumps, remote filling sumps, manual dip sumps, monitoring well, grounding points and so on.

Dispenser Sumps are designed under the dispenser in gas station to protect the valves, fitting and compensation flexible pipe, **Compolite**[®] provide different types of supports to meet the different types of dispensers.

Advantage

Watertight

Compolite[®] underground containment sumps are watertight, which prevents the water and dusts outside from entering into the sumps and also prevents the release of gas inside from penetrating into the soils. It can protect the pumps, valves in the tank sumps and make them long life in gas station.

Easy and Quick Installation

Compolite[®] underground containment sumps could replace the past concrete sumps; it will make installation shorter and easier.

Anti-static Electricity

Compolite[®] underground containment sumps are conductive, which eliminate the potential fire risk caused by static electricity in gas station.

Light Weight and Strong Structure

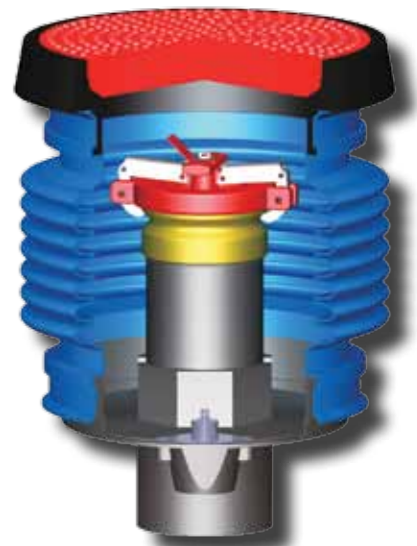
Advanced and reasonable construct designs, being made with high-quality composite materials and pioneering production technologies, all of those make **Compolite**[®] underground containment sumps lighter weights and strong structures. The density of composite sumps is only 1/4 of steel; the structure is much stronger than polyethylene sumps, so **Compolite**[®] sumps are more suitable for underground installation in gas station.

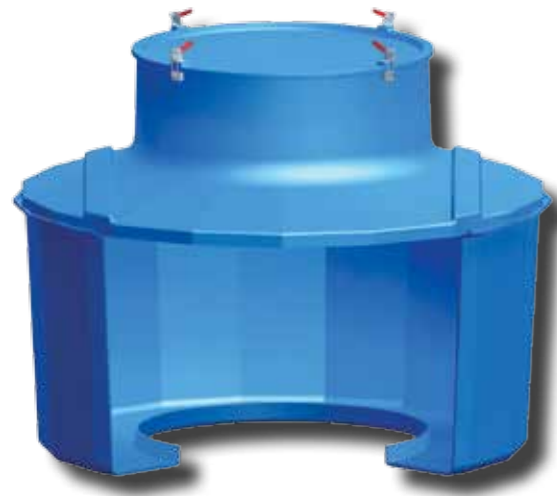
Resistance to Corrosions, Ageing, Hydrocarbons, Biofuels

The properties of composite fiberglass materials provide the resistance to corruptions, ageing, hydrocarbons, biofuels for **Compolite**[®] underground containments sumps. So our sumps are very suitable for installation in gas station.

Long Life

Compolite[®] underground containment sumps are made by high-quality resin and fiberglass with ageing-resistance, which make our sumps longer life.



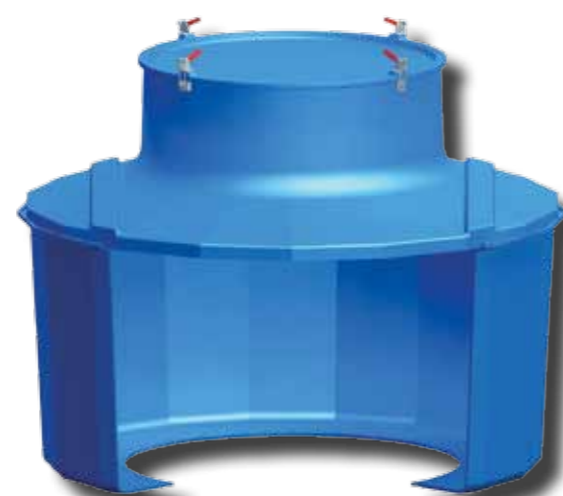


Tank Round Manhole Sumps Entry Seals Connected

Contain three parts ①internal lid, ②corbel, and ③base. The internal lid is locked onto the corbel tightly to prevent the water penetration. The opening diameter of corbels is 800mm. The base is connected with oil tank manhole via entry seal kits.

Article No.

RSE 125090 Base ϕ 1200x500MM
 RSE 125091 Base ϕ 1200x500MM,cond.
 RSE 127090 Base ϕ 1200x700MM
 RSE 127091 Base ϕ 1200x700MM,cond.
 RSE 129090 Base ϕ 1200x900MM
 RSE 129091 Base ϕ 1200x900MM,cond.
 RSE 145090 Base ϕ 1400x500MM
 RSE 145091 Base ϕ 1400x500MM,cond.
 RSE 147090 Base ϕ 1400x700MM
 RSE 147091 Base ϕ 1400x700MM,cond.
 RSE 149090 Base ϕ 1400x900MM
 RSE 149091 Base ϕ 1400x900MM,cond.
 RSE 165090 Base ϕ 1600x500MM
 RSE 165091 Base ϕ 1600x500MM,cond.
 RSE 167090 Base ϕ 1600x700MM
 RSE 167091 Base ϕ 1600x700MM,cond.
 RSE 169090 Base ϕ 1600x900MM
 RSE 169091 Base ϕ 1600x900MM,cond.

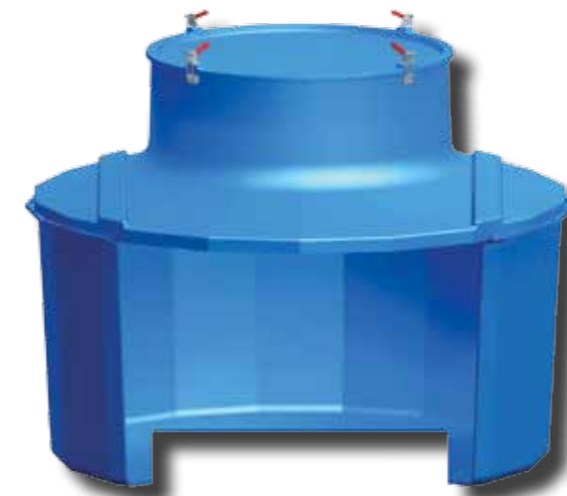


Tank Round Manhole Sumps Round Flange Connected

Contain three parts ①internal lid, ②corbel, and ③base. The internal lid is locked onto the corbel tightly to prevent the water penetration. The opening diameter of corbels is 800mm. The base is connected with oil tank manhole via round upstand flanges.

Article No.

RSR 125090 Base ϕ 1200x500MM
 RSR 125091 Base ϕ 1200x500MM,cond.
 RSR 127090 Base ϕ 1200x700MM
 RSR 127091 Base ϕ 1200x700MM,cond.
 RSR 129090 Base ϕ 1200x900MM
 RSR 129091 Base ϕ 1200x900MM,cond.
 RSR 145090 Base ϕ 1400x500MM
 RSR 145091 Base ϕ 1400x500MM,cond.
 RSR 147090 Base ϕ 1400x700MM
 RSR 147091 Base ϕ 1400x700MM,cond.
 RSR 149090 Base ϕ 1400x900MM
 RSR 149091 Base ϕ 1400x900MM,cond.
 RSR 165090 Base ϕ 1600x500MM
 RSR 165091 Base ϕ 1600x500MM,cond.
 RSR 167090 Base ϕ 1600x700MM
 RSR 167091 Base ϕ 1600x700MM,cond.
 RSR 169090 Base ϕ 1600x900MM
 RSR 169091 Base ϕ 1600x900MM,cond.

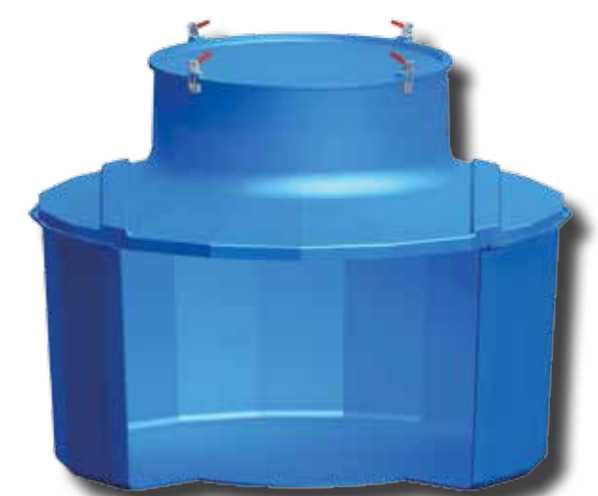


Tank Round Manhole Sumps Square Flange Connected

Contain three parts ①internal lid, ②corbel, and ③base. The internal lid is locked onto the corbel tightly to prevent the water penetration. The opening diameter of corbels is 800mm. The base is connected with oil tank manhole via square upstand flanges.

Article No.

RSS 125090 Base ϕ 1200x500MM
 RSS 125091 Base ϕ 1200x500MM,cond.
 RSS 127090 Base ϕ 1200x700MM
 RSS 127091 Base ϕ 1200x700MM,cond.
 RSS 129090 Base ϕ 1200x900MM
 RSS 129091 Base ϕ 1200x900MM,cond.
 RSS 145090 Base ϕ 1400x500MM
 RSS 145091 Base ϕ 1400x500MM,cond.
 RSS 147090 Base ϕ 1400x700MM
 RSS 147091 Base ϕ 1400x700MM,cond.
 RSS 149090 Base ϕ 1400x900MM
 RSS 149091 Base ϕ 1400x900MM,cond.
 RSS 165090 Base ϕ 1600x500MM
 RSS 165091 Base ϕ 1600x500MM,cond.
 RSS 167090 Base ϕ 1600x700MM
 RSS 167091 Base ϕ 1600x700MM,cond.
 RSS 169090 Base ϕ 1600x900MM
 RSS 169091 Base ϕ 1600x900MM,cond.



Tank Round Manhole Sumps Solid Base

Contain three parts ①internal lid, ②corbel, and ③base. The internal lid is locked onto the corbel tightly to prevent the water penetration. The opening diameter of corbels is 800mm. The solid base can be cut according to those actual requirements on site.

Article No.

RSB 125090 Base ϕ 1200x500MM
 RSB 125091 Base ϕ 1200x500MM,cond.
 RSB 127090 Base ϕ 1200x700MM
 RSB 127091 Base ϕ 1200x700MM,cond.
 RSB 129090 Base ϕ 1200x900MM
 RSB 129091 Base ϕ 1200x900MM,cond.
 RSB 145090 Base ϕ 1400x500MM
 RSB 145091 Base ϕ 1400x500MM,cond.
 RSB 147090 Base ϕ 1400x700MM
 RSB 147091 Base ϕ 1400x700MM,cond.
 RSB 149090 Base ϕ 1400x900MM
 RSB 149091 Base ϕ 1400x900MM,cond.
 RSB 165090 Base ϕ 1600x500MM
 RSB 165091 Base ϕ 1600x500MM,cond.
 RSB 167090 Base ϕ 1600x700MM
 RSB 167091 Base ϕ 1600x700MM,cond.
 RSB 169090 Base ϕ 1600x900MM
 RSB 169091 Base ϕ 1600x900MM,cond.

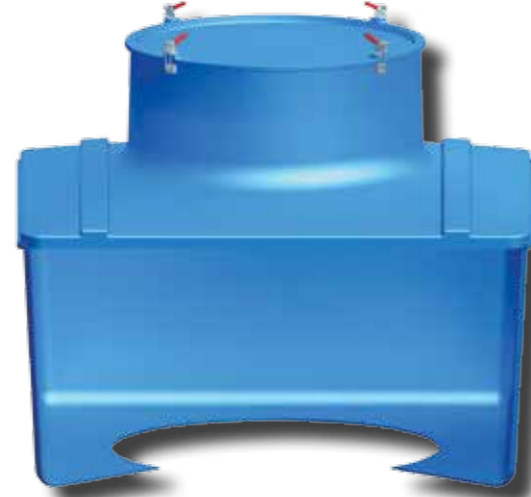


Tank Square Manhole Sumps Entry Seals Connected

Contain three parts ①internal lid, ②corbel, and ③base. The internal lid is locked onto the corbel tightly to prevent the water penetration. The opening diameter of corbels is 800mm. The base is connected with oil tank manhole via entry seal kits.

Article No.

SSE 125090 Base 1200x1200x500MM
 SSE 125091 Base 1200x1200x500MM,cond.
 SSE 127090 Base 1200x1200x700MM
 SSE 127091 Base 1200x1200x700MM,cond.
 SSE 129090 Base 1200x1200x900MM
 SSE 129091 Base 1200x1200x900MM,cond.
 SSE 145090 Base 1400x1400x500MM
 SSE 145091 Base 1400x1400x500MM,cond.
 SSE 147090 Base 1400x1400x700MM
 SSE 147091 Base 1400x1400x700MM,cond.
 SSE 149090 Base 1400x1400x900MM
 SSE 149091 Base 1400x1400x900MM,cond.
 SSE 165090 Base 1600x1600x500MM
 SSE 165091 Base 1600x1600x500MM,cond.
 SSE 167090 Base 1600x1600x700MM
 SSE 167091 Base 1600x1600x700MM,cond.
 SSE 169090 Base 1600x1600x900MM
 SSE 169091 Base 1600x1600x900MM,cond.

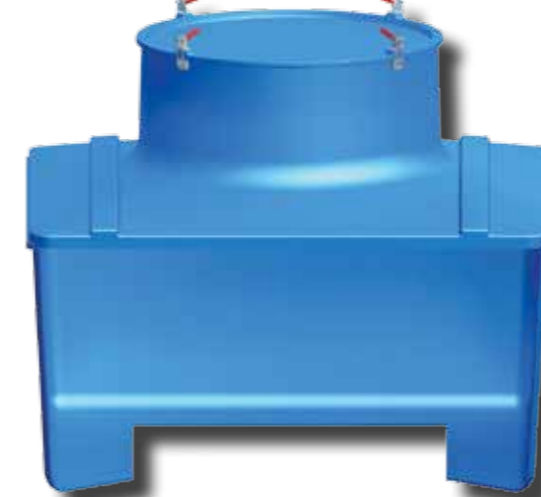


Tank Square Manhole Sumps Round Flange Connected

Contain three parts ①internal lid, ②corbel, and ③base. The internal lid is locked onto the corbel tightly to prevent the water penetration. The opening diameter of corbels is 800mm. The base is connected with oil tank manhole via round upstand flanges.

Article No.

SSR 125090 Base 1200x1200x500MM
 SSR 125091 Base 1200x1200x500MM,cond.
 SSR 127090 Base 1200x1200x700MM
 SSR 127091 Base 1200x1200x700MM,cond.
 SSR 129090 Base 1200x1200x900MM
 SSR 129091 Base 1200x1200x900MM,cond.
 SSR 145090 Base 1400x1400x500MM
 SSR 145091 Base 1400x1400x500MM,cond.
 SSR 147090 Base 1400x1400x700MM
 SSR 147091 Base 1400x1400x700MM,cond.
 SSR 149090 Base 1400x1400x900MM
 SSR 149091 Base 1400x1400x900MM,cond.
 SSR 165090 Base 1600x1600x500MM
 SSR 165091 Base 1600x1600x500MM,cond.
 SSR 167090 Base 1600x1600x700MM
 SSR 167091 Base 1600x1600x700MM,cond.
 SSR 169090 Base 1600x1600x900MM
 SSR 169091 Base 1600x1600x900MM,cond.



Tank Square Manhole Sumps Square Flange Connected

Contain three parts ①internal lid, ②corbel, and ③base. The internal lid is locked onto the corbel tightly to prevent the water penetration. The opening diameter of corbels is 800mm. The base is connected with oil tank manhole via square upstand flanges.

Article No.

SSS 125090 Base 1200x1200x500MM
 SSS 125091 Base 1200x1200x500MM,cond.
 SSS 127090 Base 1200x1200x700MM
 SSS 127091 Base 1200x1200x700MM,cond.
 SSS 129090 Base 1200x1200x900MM
 SSS 129091 Base 1200x1200x900MM,cond.
 SSS 145090 Base 1400x1400x500MM
 SSS 145091 Base 1400x1400x500MM,cond.
 SSS 147090 Base 1400x1400x700MM
 SSS 147091 Base 1400x1400x700MM,cond.
 SSS 149090 Base 1400x1400x900MM
 SSS 149091 Base 1400x1400x900MM,cond.
 SSS 165090 Base 1600x1600x500MM
 SSS 165091 Base 1600x1600x500MM,cond.
 SSS 167090 Base 1600x1600x700MM
 SSS 167091 Base 1600x1600x700MM,cond.
 SSS 169090 Base 1600x1600x900MM
 SSS 169091 Base 1600x1600x900MM,cond.



Tank Square Manhole Sumps Solid Base

Contain three parts ①internal lid, ②corbel, and ③base. The internal lid is locked onto the corbel tightly to prevent the water penetration. The opening diameter of corbels is 800mm. The solid base can be cut according to the actual requirements on site.

Article No.

SSB 125090 Base 1200x1200x500MM
 SSB 125091 Base 1200x1200x500MM,cond.
 SSB 127090 Base 1200x1200x700MM
 SSB 127091 Base 1200x1200x700MM,cond.
 SSB 129090 Base 1200x1200x900MM
 SSB 129091 Base 1200x1200x900MM,cond.
 SSB 145090 Base 1400x1400x500MM
 SSB 145091 Base 1400x1400x500MM,cond.
 SSB 147090 Base 1400x1400x700MM
 SSB 147091 Base 1400x1400x700MM,cond.
 SSB 149090 Base 1400x1400x900MM
 SSB 149091 Base 1400x1400x900MM,cond.
 SSB 165090 Base 1600x1600x500MM
 SSB 165091 Base 1600x1600x500MM,cond.
 SSB 167090 Base 1600x1600x700MM
 SSB 167091 Base 1600x1600x700MM,cond.
 SSB 169090 Base 1600x1600x900MM
 SSB 169091 Base 1600x1600x900MM,cond.



Square Fuel Tank Manhole Sumps

Contain three parts ①internal lid, ②corbel, and ③base. The internal lid is locked onto the corbel tightly to prevent the water penetration. The clear opening diameter of the corbel is 1300mm * 1300mm. It is installed typically together with light duty covers backyard in gas stations.

Article No.

- SSE 145014 Base 1400x1400x500MM, entry seals connected
- SSE 145015 Base 1400x1400x500MM,entry seals connected,cond.
- SSE 147014 Base 1400x1400x700MM,entry seals connected
- SSE 147015 Base 1400x1400x700MM,entry seals connected,cond.
- SSE 149014 Base 1400x1400x900MM,entry seals connected
- SSE 149015 Base 1400x1400x900MM,entry seals connected,cond.
- SSR 145014 Base 1400x1400x500MM,round upstand flange connected
- SSR 145015 Base 1400x1400x500MM,round upstand flange connected,cond.
- SSR 147014 Base 1400x1400x700MM,round upstand flange connected
- SSR 147015 Base 1400x1400x700MM,round upstand flange connected,cond.
- SSR 149014 Base 1400x1400x900MM,round upstand flange connected
- SSR 149015 Base 1400x1400x900MM,round upstand flange connected,cond.
- SSS 145014 Base 1400x1400x500MM,square upstand flange connected
- SSS 145015 Base 1400x1400x500MM,square upstand flange connected,cond.
- SSS 147014 Base 1400x1400x700MM,square upstand flange connected
- SSS 147015 Base 1400x1400x700MM,square upstand flange connected,cond.
- SSS 149014 Base 1400x1400x900MM,square upstand flange connected
- SSS 149015 Base 1400x1400x900MM,square upstand flange connected,cond.
- SSB 145014 Base 1400x1400x500MM,solid base
- SSB 145015 Base 1400x1400x500MM,solid base,cond.
- SSB 147014 Base 1400x1400x700MM,solid base
- SSB 147015 Base 1400x1400x700MM,solid base,cond.
- SSB 149014 Base 1400x1400x900MM,solid base
- SSB 149015 Base 1400x1400x900MM,solid base,cond.



Spill Containment Handhole

Compolite® spill containment is normally used a hand hole sumps for over-fill prevention filling point, it can also be used for the manual dip, the monitoring well and the grounding point. The body is made by the flexible compensation polyurethane pipe structure. There is a manual valve on the base which can fill the over-filled oils into the fuel tank again.

Article No.

- RSC5080CB with the black cover C250, DN80
- RSC5100CB with the black cover C250, DN100
- RSC5080DB with the black cover D400, DN80
- RSC5100DB with the black cover D400, DN100
- RSC5080EB with the black cover E600, DN80
- RSC5100EB with the black cover E600, DN100
- RSC5080CR with the red cover C250, DN80
- RSC5100CR with the red cover C250, DN100
- RSC5080DR with the red cover D400, DN80
- RSC5100DR with the red cover D400, DN100
- RSC5080ER with the red cover E600, DN80
- RSC5100ER with the red cover E600, DN100
- RSC5080CL with the blue cover C250, DN80
- RSC5100CL with the blue cover C250, DN100
- RSC5080DL with the blue cover D400, DN80
- RSC5100DL with the blue cover D400, DN100
- RSC5080EL with the blue cover E600, DN80
- RSC5100EL with the blue cover E600, DN100
- RSC5080CG with the green cover C250, DN80
- RSC5100CG with the green cover C250, DN100
- RSC5080DG with the green cover D400, DN80
- RSC5100DG with the green cover D400, DN100
- RSC5080EG with the green cover E600, DN80
- RSC5100EG with the green cover E600, DN100
- RSC5080CY with the yellow cover C250, DN80
- RSC5100CY with the yellow cover C250, DN100
- RSC5080DY with the yellow cover D400, DN80
- RSC5100DY with the yellow cover D400, DN100
- RSC5080EY with the yellow cover E600, DN80
- RSC5100EY with the yellow cover E600, DN100



Square Hand Hole Sumps HSS4560

Compolite® square hand hole sumps can be used as filling points, vapor recovery points, manual dip points, monitoring well, grounding points and so on. The base size is L450mm * W450mm* H600mm.

Article No.

- HSS4560CB with the blackcover C250
- HSS4561CB with the blackcover C250,cond.
- HSS4560DB with the blackcover D400
- HSS4561DB with the blackcover D400,cond.
- HSS4560EB with the blackcover E600
- HSS4561EB with the blackcover E600,cond.
- HSS4560CR with the redcover C250
- HSS4561CR with the redcover C250,cond.
- HSS4560DR with the redcover D400
- HSS4561DR with the redcover D400,cond.
- HSS4560ER with the redcover E600
- HSS4561ER with the redcover E600,cond.
- HSS4560CL with the bluecover C250
- HSS4561CL with the bluecover C250,cond.
- HSS4560DL with the bluecover D400
- HSS4561DL with the bluecover D400,cond.
- HSS4560EL with the bluecover E600
- HSS4561EL with the bluecover E600,cond.
- HSS4560CG with the greencover C250
- HSS4561CG with the greencover C250,cond.
- HSS4560DG with the greencover D400
- HSS4561DG with the greencover D400,cond.
- HSS4560EG with the greencover E600
- HSS4561EG with the greencover E600,cond.
- HSS4560CY with the yellowcover C250
- HSS4561CY with the yellowcover C250,cond.
- HSS4560DY with the yellowcover D400
- HSS4561DY with the yellowcover D400,cond.
- HSS4560EY with the yellowcover E600
- HSS4561EY with the yellowcover E600,cond.

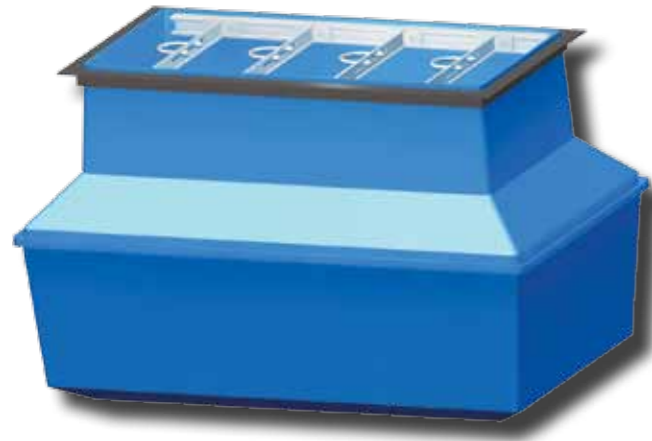


Round Hand Hole Sumps HSS4560

Compolite® round hand hole sumps can be used as filling points, vapor recovery poits, manual dip points, monitoring well, grounding points and so on. The base size is ø450mm * H600mm.

Article No.

- HRS4560CB with the black cover 250
- HRS4561CB with the black cover C250,cond.
- HRS4560DB with the black cover D400
- HRS4561DB with the black cover D400,cond.
- HRS4560EB with the black cover E600
- HRS4561EB with the black cover E600,cond.
- HRS4560CR with the red cover C250
- HRS4561CR with the red cover C250,cond.
- HRS4560DR with the red cover D400
- HRS4561DR with the red cover D400,cond.
- HRS4560ER with the red cover E600
- HRS4561ER with the red cover E600,cond.
- HRS4560CL with the blue cover C250
- HRS4561CL with the blue cover C250,cond.
- HRS4560DL with the blue cover D400
- HRS4561DL with the blue cover D400,cond.
- HRS4560EL with the blue cover E600
- HRS4561EL with the blue cover E600,cond.
- HRS4560CG with the green cover C250
- HRS4561CG with the green cover C250,cond.
- HRS4560DG with the green cover D400
- HRS4561DG with the green cover D400,cond.
- HRS4560EG with the green cover E600
- HRS4561EG with the green cover E600,cond.
- HRS4560CY with the yellow cover C250
- HRS4561CY with the yellow cover C250,cond.
- HRS4560DY with the yellow cover D400
- HRS4561DY with the yellow cover D400,cond.
- HRS4560EY with the yellow cover E600
- HRS4561EY with the yellow cover E60,cond.



Dispenser Sumps

Compolite® dispenser sumps are designed to be installed under fuel dispensers in gas stations. Different sizes of customized support stands could meet all types of fuel dispensers. When you order dispenser sumps, please provide us with installation size of the support base of fuel dispensers in order to be installed.

Article No.

CDS1270 Base 1200x700x400mm

CDS1271 Base 1200x700x400mm, cond.

Remote Filling Box

Compolite® has many types of remote filling box with different sizes which could meet different quantities of fuel filling points in gas stations. There are two kinds of materials of remote filling box: stainless steel and carbon steel painted with grey colors. Gas spring makes it easy to open the cover. Professional types with the support frame and standard types without the support frame. Normally they are installed backyard in gas stations.

Article No.

SRF168570 4 filling points, standard, carbon steel

PRF168570 4 filling points, professional, carbon steel

SRF168570S 4 filling points, standard, stainless steel

PRF168570S 4 filling points, professional, stainless steel

SRF208570 5 filling points, standard, carbon steel

PRF208570 5 filling points, professional, carbon steel

SRF208570S 5 filling points, standard, stainless steel

PRF208570S 5 filling points, professional, stainless steel

SRF248570 6 filling points, standard, carbon steel

PRF248570 6 filling points, professional, carbon steel

SRF248570S 6 filling points, standard, stainless steel

PRF248570S 6 filling points, professional, stainless steel

Gaskets for Upright Flange

It is made of NBR materials, used for watertight sealing between fuel tanks and tank manhole sumps. They contain screws, nuts and washers.

Article No.

RGT 9590 Diameter ϕ 959mm

SGT 8900 890x890mm



设定键
测定条件, 判定标准
等参数的设定

MASTER键
基准检测开始

CAL键
自动读取被测物容积

Leakage Tester

Compolite® Leakage Tester is specially designed to test the integrity of fuel tank manhole sumps, hand hole sumps and dispenser sumps during their installation. It can form the right negative pressure inside of the sumps via creating vacuum to simulate the effect of ground water pressure outside of sumps.

- **Big LCD display, clear operation interface**
- **Micro-computer control unit**
- **Many kinds of units to be displayed available**
 - Test results can be displayed with Pa, ml/min, Pa/min, Pa.cm³/sec
 - Test pressure can be displayed with kPa, kg/cm², PSI, bar
- **Test process can be displayed with curve drawings**
 - Get to know the leakage trend via watching changing of pressure curve drawings
- **Store the latest 500 groups of test data**
 - Make it easy to analyze and summarize qualities status via analyzing and checking historic data
- **Outer Dimension: L480mm * W360mm * H260mm**
- **Weight: 9KG**
- **USB interface: save data directly into USB memory stick (optional)**
- **COM interface: can connect with printers directly (optional)**

Article No.

LT8000

Seal Caps

Article No.

- TSC3000B Black, DN80
- TSC4000B Black, DN100
- TSC3000R Red, DN80
- TSC4000R Red, DN100
- TSC3000L Blue, DN80
- TSC4000L Blue, DN100
- TSC3000G Green, DN80
- TSC4000G Green, DN100
- TSC3000Y Yellow, DN80
- TSC4000Y Yellow, DN100

