

Entry Seal Kits

Compolite® entry seal kits are right and ideal watertight products to seal the pipes, cables tightly during they enter into fuel tank manhole sumps, hand hole sumps and dispenser sumps in gas stations

Introduction

Compolite® entry seal kits are specially designed to seal the pipes, cables tightly during they enter into fuel tank manhole sumps, hand hole sumps and dispenser sumps in gas stations. They prevent water and dusts from penetrating into fuel tank manhole sumps, hand hole sumps and dispenser sumps, protect the fuel pumps, valves etc inside of sumps. Meanwhile those entry seal kits also prevent the leakage of fuel gas penetrating into soils around fuel tank manhole sumps, hand hole sumps and dispenser sumps. Via the selection of best and right rubber materials and the professional designs, our entry seal kits are installed and maintained easily and flexibly with high watertight properties. Moreover our entry seals kits are resistant to corrosion, ageing, hydrocarbons and biofuels. The wide range of sizes of entry seals kits cover the pipe/cable with diameters from 4mm to 160mm.

Compolite® entry seal kits include pipe entry seal kits, cable entry seal kits and manhole entry seal kits. All of our entry seal kits are patented products owned by **Compolite**® exclusively.

Advantage

Wide Range of Sizes

Apply to cables/pipes with diameter from 4mm to 160mm which enter into fuel tank manhole sumps, hand hole sumps and dispenser sumps. They cover all sizes of cables and pipes installed in the gas station.

Watertight

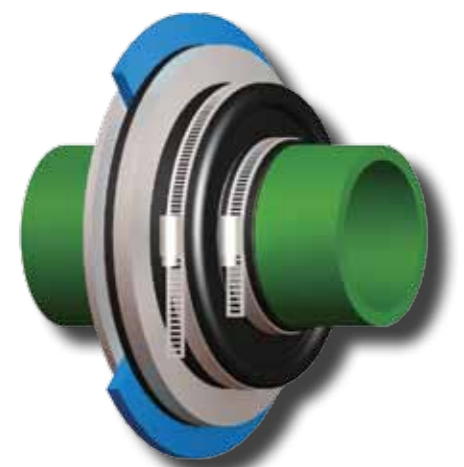
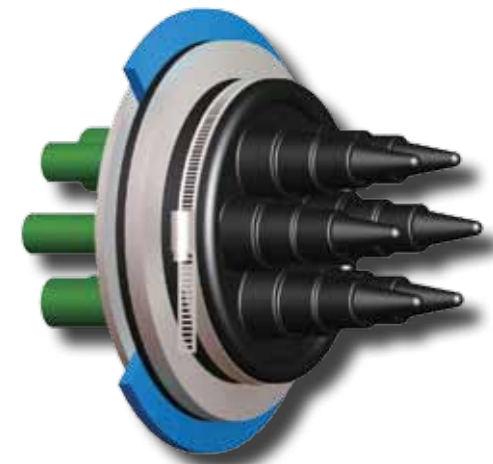
Compolite® entry seal kits are right and ideal watertight products to seal the pipes, cables tightly during they enter into fuel tank manhole sumps, hand hole sumps and dispenser sumps in gas stations. They prevent water and dusts outside from entering into the sumps and also prevent the release of fuel gas inside from penetrating into the soils. So they effectively protect fuel pumps, valves etc in sumps and make them longer life in gas station.

Quick and Easy Installations/Maintenances

Exclusive patented screw locking structure and a single hole installation design make installation and maintenance on site more easily and flexibly. Even after installation, the maintenance engineer can replace our pipe/cable entry seal kits easily inside.

Resistant to Corrosions, Ageing, Hydrocarbons, Biofuels

Compolite® select the best and right rubber materials to produce our entry seal kits. All of our entry seal kits are resistant to corrosions, ageing, hydrocarbons, biofuels and so on. So our pipe/cable entry seal kits are very suitable for installation environment in gas station.



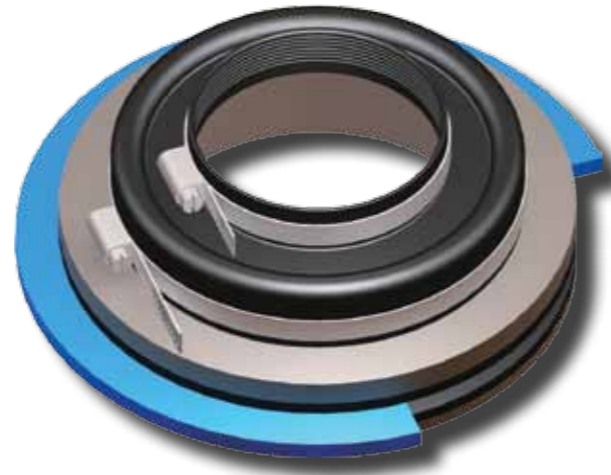


Pipe Single Sided Entry Seal Kits DN50

Apply to watertight sealing while the single wall pipes with diameter 50mm enter into fuel tank manhole sumps, hand hole sumps and dispenser sumps.

Article No.

PEB 5000 with the galvanized flange
PEB 5000S with the stainless flange

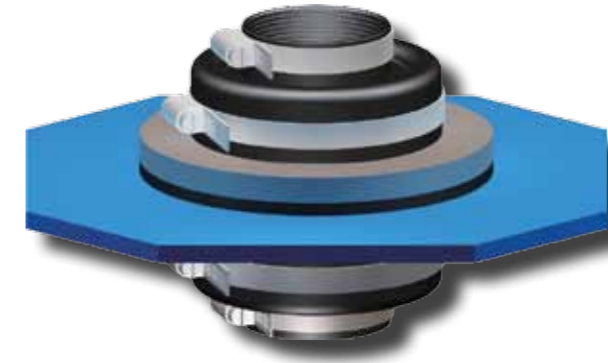


Pipe Single Sided Entry Seal Kits DN90

Apply to watertight sealing while the single wall pipes with diameter 90mm enter into fuel tank manhole sumps, the hand hole sumps and the dispenser sumps.

Article No.

PEB 9000 with the galvanized flange
PEB 9000S with the stainless flange



Pipe Double Sided Entry Seal Kits DN50

Apply to watertight sealing while the single pipes with diameter 50mm enter into fuel tank manhole sumps, hand hole sumps and dispenser sumps.

Article No.

PED 5000 with the galvanized flange
PED 5000S with the stainless flange



Pipe Double Sided Entry Seal Kits DN90

Apply to watertight sealing while the single pipes with diameter 90mm enter into fuel tank manhole sumps, hand hole sumps and dispenser sumps.

Article No.

PED 9000 with the galvanized flange
PED 9000S with the stainless flange

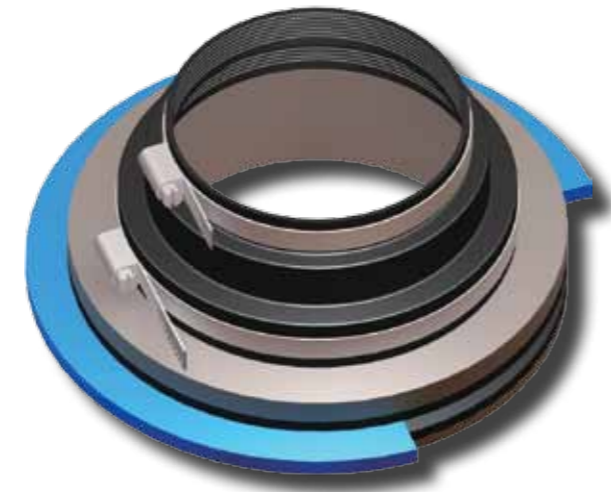


Pipe Single Sided Entry Seal Kits DN75/63

Apply to watertight sealing while the double wall pipes with diameter 75/63mm enter into fuel tank manhole sumps, hand hole sumps and dispenser sumps. It also can apply to watertight sealing for the single wall pipes with the diameter 63mm or 75mm

Article No.

PEB 075063 with the galvanized flange
PEB 075063S with the stainless flange

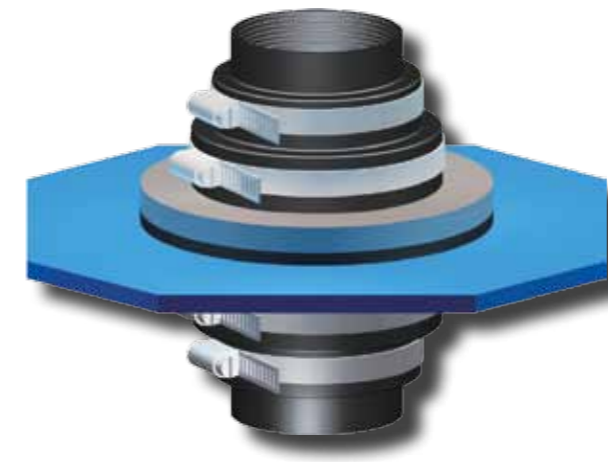


Pipe Single Sided Entry Seal Kits DN125/110

Apply to watertight sealing while the double wall pipes with diameter 125/110mm enter into fuel tank manhole sumps, hand hole sumps and dispenser sumps. It also can apply to watertight sealing for the single wall pipes with the diameter 110mm or 125mm

Article No.

PEB 125110 with the galvanized flange
PEB 125110S with the stainless flange

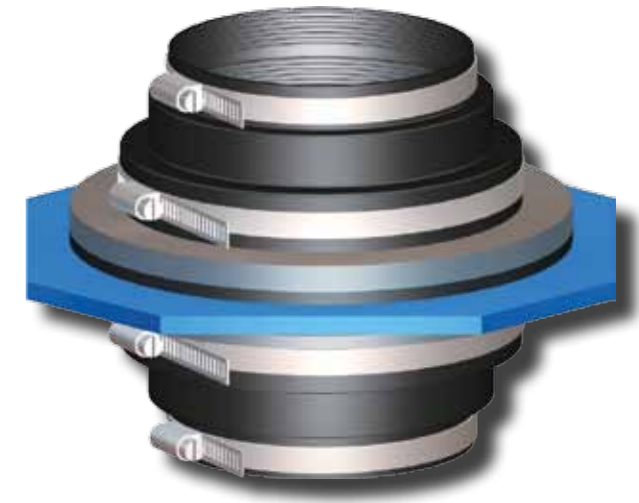


Pipe Double Sided Entry Seal Kits DN75/63

Apply to watertight sealing while the double wall pipes with diameter 75/63mm enter into the tank manhole sumps, the hand hole sumps and the dispenser sumps. It also can apply to watertight sealing for the single wall pipes with diameter 63mm or 75mm

Article No.

PED 075063 with the galvanized flange
PED 075063S with the stainless flange

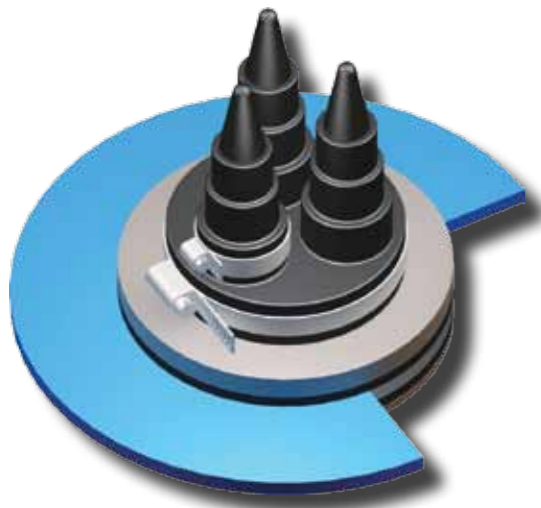


Pipe Double Sided Entry Seal Kits DN125/110

Apply to watertight sealing while the double wall pipes with diameter 125/110mm enter into fuel tank manhole sumps, hand hole sumps and dispenser sumps. It also can apply to watertight sealing for the single wall pipes with diameter 110mm or 125mm.

Article No.

PED 125110 with the galvanized flange
PED 125110S with the stainless flange

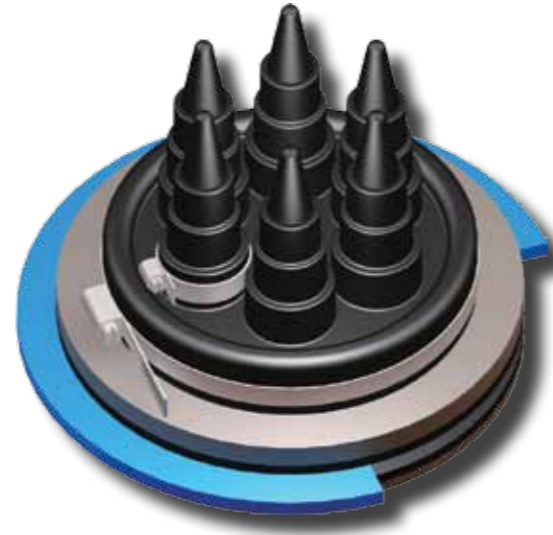


Cable Single Sided Entry Seal Kits DN32/25/20(3 cables)

Apply to watertight sealing while the cable pipes with diameter 20mm, 25mm and 32mm enter into fuel tank manhole sumps, hand hole sumps and dispenser sumps. At most it can seal tightly 3 cables with diameter from 4mm to 15mm at the same time.

Article No.

CEB 322520-3 with the galvanized flange
CEB 322520-3S with the stainless flange

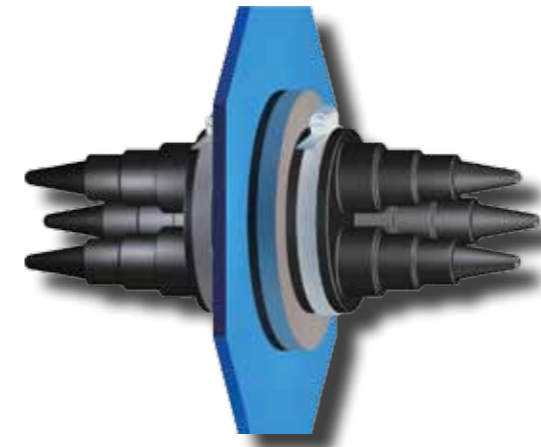


Cable Single Sided Entry Seal Kits DN32/25/20(6 cables)

Apply to watertight sealing while the cable pipes with diameter 20mm, 25mm and 32mm enter into fuel tank manhole sumps, hand hole sumps and dispenser sumps. At most it can seal tightly 6 cables with diameter from 4mm to 15mm at the same time.

Article No.

CEB 322520-6 with the galvanized flange
CEB 322520-6S with the stainless flange

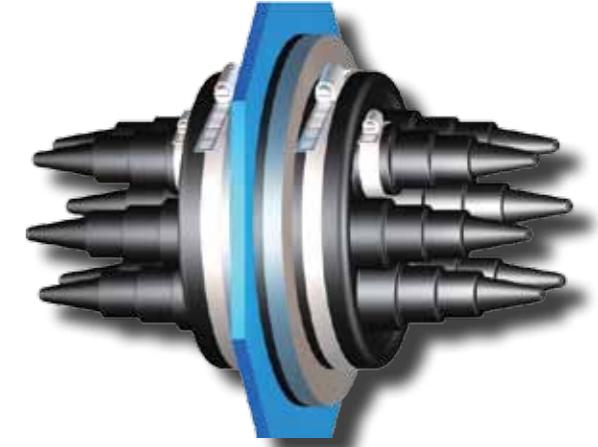


Cable Double Sided Entry Seal Kits DN32/25/20(3 cables)

Apply to watertight sealing while the cable pipes with diameter 20mm, 25mm and 32mm enter into fuel tank manhole sumps, the hand hole sumps and the dispenser sumps. At most it can seal tightly 3 cables with diameter from 4mm to 15mm at the same time.

Article No.

CED 322520-3 with the galvanized flange
CED 322520-3S with the stainless flange

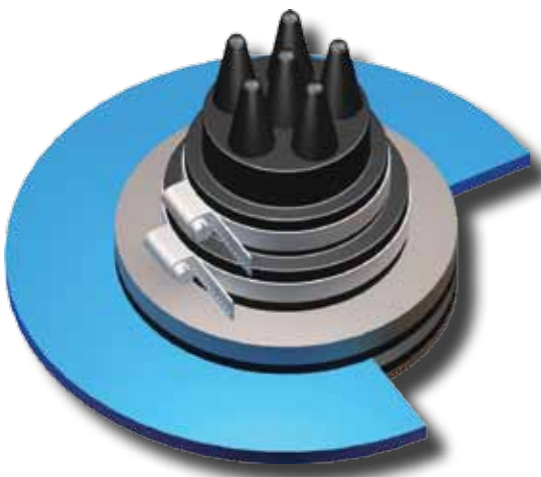


Cable Double Sided Entry Seal Kits DN32/25/20(6 cables)

Apply to watertight sealing while the cable pipes with diameter 20mm, 25mm and 32mm enter into fuel tank manhole sumps, the hand hole sumps and the dispenser sumps. At most it can seal tightly 6 cables with diameter from 4mm to 15mm at the same time.

Article No.

CED 322520-6 with the galvanized flange
CED 322520-6S with the stainless flange

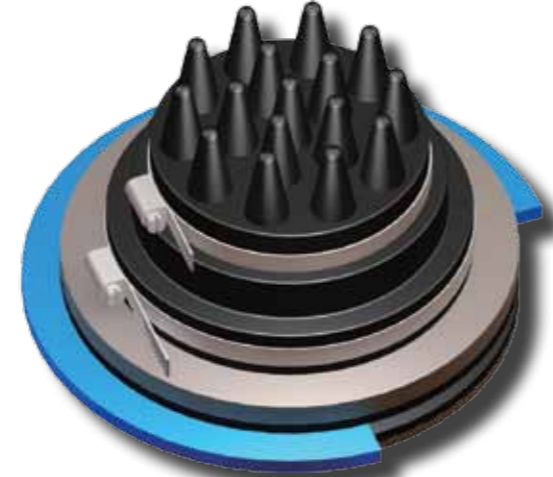


Cable Single Sided Entry Seal Kits DN75/63 (6 cables)

Apply to watertight sealing while the cable pipes with diameter 63mm or 75mm enter into fuel tank manhole sumps, hand hole sumps and dispenser sumps. At most it can seal tightly 6 cables with diameter from 4mm to 15mm at the same time.

Article No.

CEB 075063-6 with the galvanized flange
CEB 075063-6S with the stainless flange

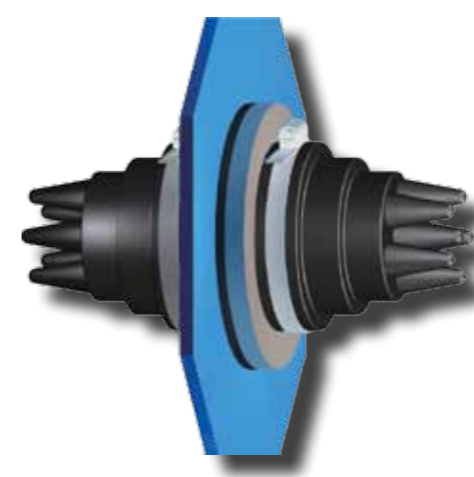


Cable Single Sided Entry Seal Kits DN125/110 (16 cables)

Apply to watertight sealing while the cable pipes with diameter 110mm or 125mm enter into fuel tank manhole sumps, hand hole sumps and dispenser sumps. At most it can seal tightly 16 cables with diameter from 4mm to 15mm at the same time.

Article No.

CEB 125110-16 with the galvanized flange
CEB 125110-16S with the stainless flange



Cable Double Sided Entry Seal Kits DN75/63 (6 cables)

Apply to watertight sealing while the cable pipes with diameter 63mm and 75mm enter into fuel tank manhole sumps, the hand hole sumps and the dispenser sumps. At most it can seal tightly 6 cables with diameter from 4mm to 15mm at the same time.

Article No.

CED 075063-6 with the galvanized flange
CED 075063-6S with the stainless flange



Cable Double Sided Entry Seal Kits DN125/110 (16 cables)

Apply to watertight sealing while the cable pipes with diameter 110mm and 125mm enter into fuel tank manhole sumps, the hand hole sumps and the dispenser sumps. At most it can seal tightly 16 cables with diameter from 4mm to 15mm at the same time.

Article No.

CED 125110-16 with the galvanized flange
CED 125110-16S with the stainless flange



Conduit Entry Seal Kits

Apply to watertight sealing while the conduit pipes/cables with diameter from 12mm to 77mm enter into fuel tank manhole sumps, hand hole sumps and dispenser sumps.

Article No.

CEB 1612	Conduit pipes/cables with dia. 12-16mm, plastics
CEB 1612S	Conduit pipes/cables with dia. 12-16mm, stainless
CEB 2518	Conduit pipes/cables with dia. 18-25mm, plastics
CEB 2518S	Conduit pipes/cables with dia. 18-25mm, stainless
CEB 3024	Conduit pipes/cables with dia. 24-30mm, plastics
CEB 3024S	Conduit pipes/cables with dia. 24-30mm, stainless
CEB 4131	Conduit pipes/cables with dia. 31-41mm, plastics
CEB 4131S	Conduit pipes/cables with dia. 31-41mm, stainless
CEB 4640	Conduit pipes/cables with dia. 40-46mm, plastics
CEB 4640S	Conduit pipes/cables with dia. 40-46mm, stainless
CEB 5144	Conduit pipes/cables with dia. 44-51mm, plastics
CEB 5144S	Conduit pipes/cables with dia. 44-51mm, stainless
CEB 5650	Conduit pipes/cables with dia. 50-56mm, plastics
CEB 5650S	Conduit pipes/cables with dia. 50-56mm, stainless
CEB 6656	Conduit pipes/cables with dia. 56-66mm, plastics
CEB 6656S	Conduit pipes/cables with dia. 56-66mm, stainless
CEB 7766	Conduit pipes/cables with dia. 66-77mm, plastics
CEB 7766S	Conduit pipes/cables with dia. 66-77mm, stainless

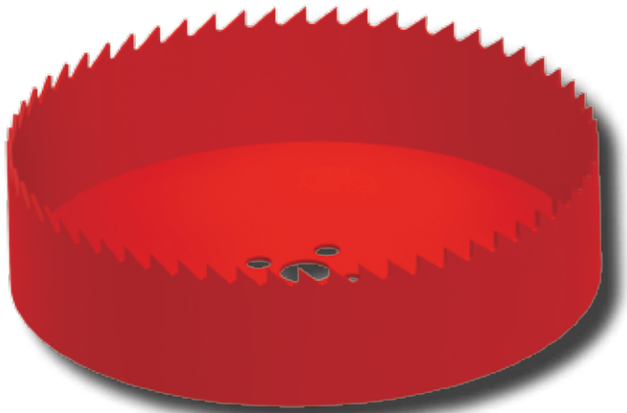


Manhole Entry Seal Kits

Apply to watertight sealing while fuel tank manholes with diameter from 550mm to 650mm enter into fuel tank manhole sumps. Due to the patented structure design owned by **Compolite®** exclusively, it enables the installation on site without any extra upstand flanges connected to fuel tanks. So it makes installation quick and easy not only for building new gas stations but also for rebuilding old gas stations.

Article No.

MEB 8060



Bimetal Hole Saw

Apply to glass fiber composite material.

Article No.

BHS1150	Diameter 115mm
BHS1700	Diameter 170mm