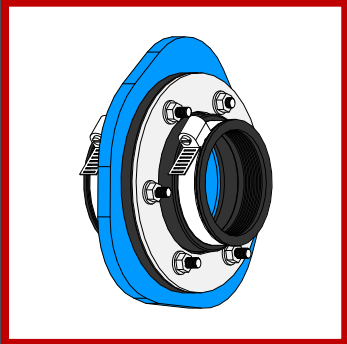


管道密封套安装说明

-螺栓拧紧型, 双层



开孔位置很关键, 必须保证管道进出垂直并壁立面, 并且要与密封套同轴同心!



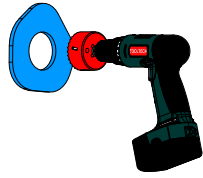
技术支持热线

☎ 手机: 18519380906
手机: 18611196411
✉ sales@compolite.com

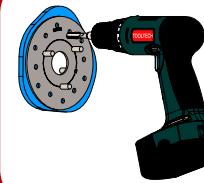
扫描下载安装说明书



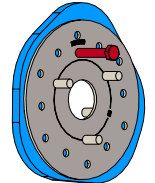
1
选择正确尺寸开孔器在井壁合适位置开孔。



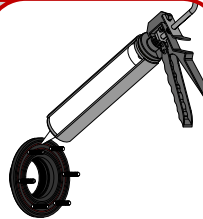
2
选择正确钻螺栓孔模板, 钻螺栓孔。



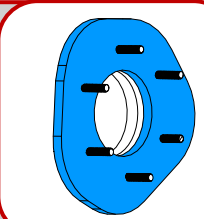
3
钻完第一个螺栓孔后, 插入 M8 销钉定位, 然后再钻其他螺栓孔。



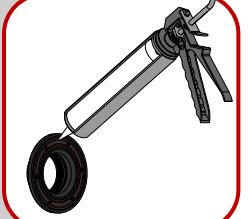
4
井外密封套螺栓两侧圆周打玻璃胶, 见红色圈示意。



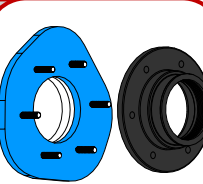
5
从井外侧装配井外密封套。



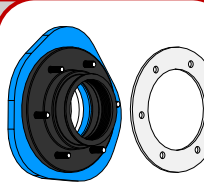
6
井内密封套螺栓孔两侧圆周打玻璃胶, 见红色圈示意。



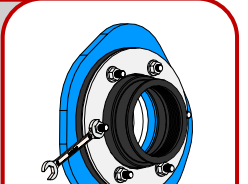
7
装配井内密封套。



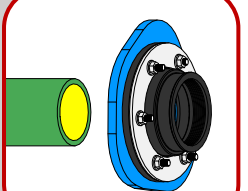
8
装配井内压板。



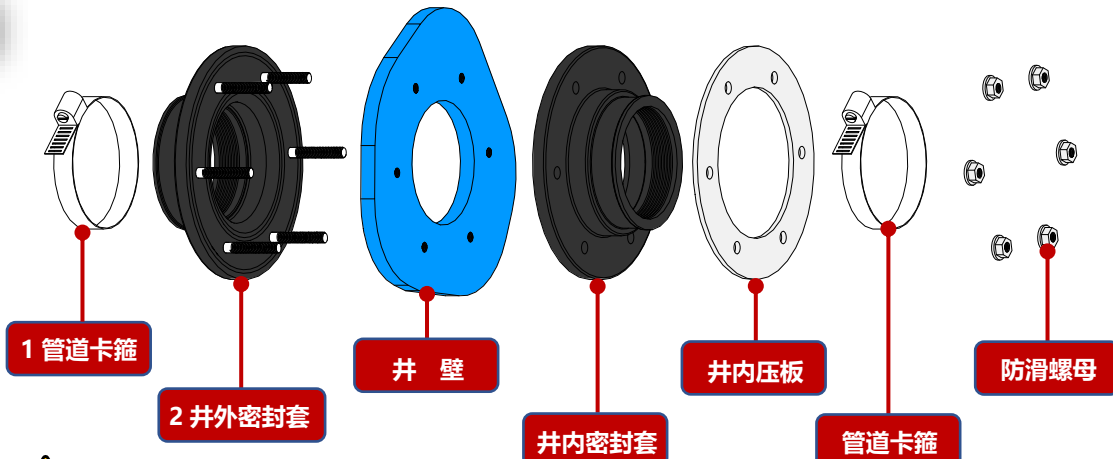
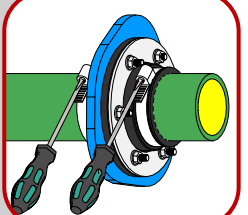
9
拧紧防滑螺母。



10
管道穿过密封套。



11
拧紧井内井外管道卡箍。



1、2 配件装井外侧